

ADVANCED

Tubing Cartridges for

- Matrix® WellMate® Dispenser

- INTEGRA® VIAFILL®

-XRD®-384

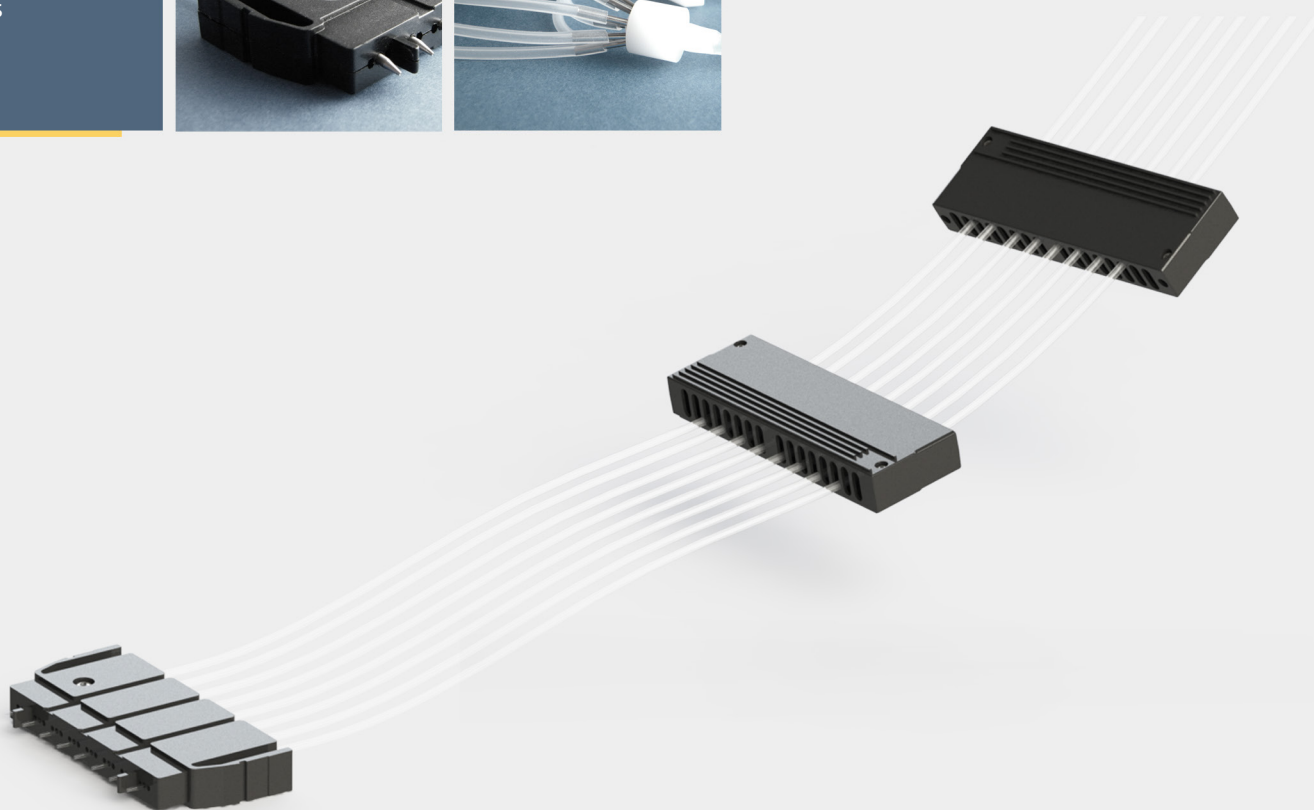
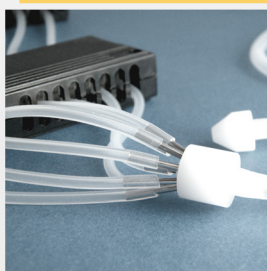
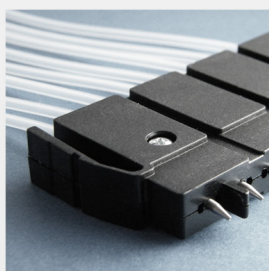


2026

- Identical Cartridges
- Angled Tip Cartridges
- Metal Tip Cartridges
- Adapter, Manifolds
- Refurbishment
- Filters

NEW

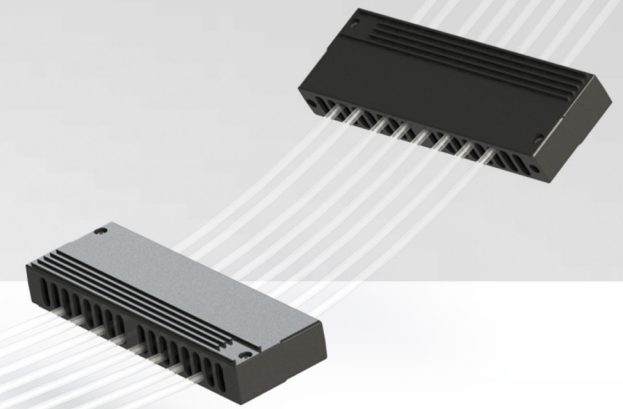
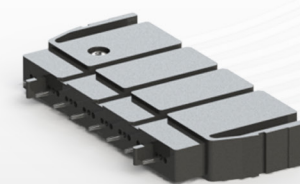
- Angled Tip Cartridges
- Filters, Manifolds



ADVANCED

## Standard-Bore Cartridges

// To convince you of the quality, you can test our products before buying.



Up to 25% extended lifetime!

### The Standard-Bore Tubing Assembly

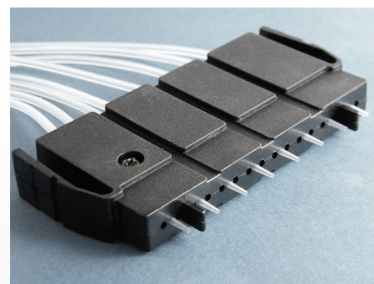
All Steinle tubing cartridges are pre-calibrated, fully autoclavable and suitable for Matrix® WellMate® systems from Thermo Scientific, INEGRA VIAFILL and XRD-384.®.

Long-term tests in our laboratories have shown that Steinle cassettes have up to 25% longer lifetime com-

- Disp. accuracy: +/- 2.0% or 1.0 µl
- Disp. precision: +/- 2.0% or 1.0 µl

Our cartridges and accessories are quality made in Germany.

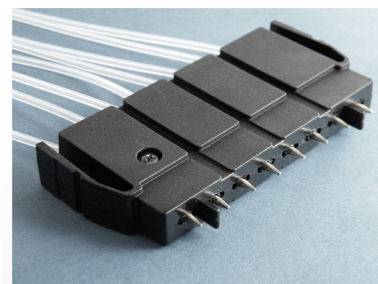
### Standard-Bore Cartridge Plastic-Molded Nozzles



- Plastic-molded nozzles
- Silicone tubing
- 6 to 96-well microplates

Cat. No.	Version	Qty	€
W-3001	Plastic (Pack of 5)	1 Pack	790,-
W-3005	Plastic (Pack of 10)	1 Pack	1495,- <small>(SAVE 5%)</small>

### Standard-Bore Cartridge Stainless Steel Nozzles

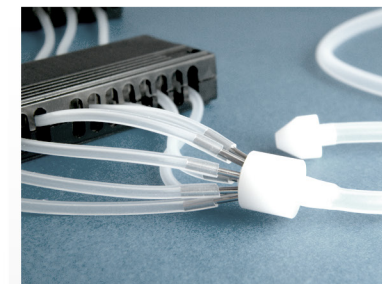


- 6 to 96-well microplates
- Hydrophobic
- Long product life
- High chemical compatibility

Cat. No.	Version	Qty	€
W-4001	Steel (Pack of 5)	1	950,-
W-4005	Steel (Pack of 10)	1 Pack	1805,- <small>(SAVE 5%)</small>

NEW

### Standard-Bore Cartridge Manifold/Adapter 8 to 1

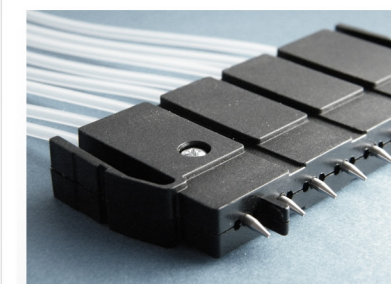


- Adapter connects 1 supply-tube to 8 standard-sized tubings.
- Ideal for automated systems
- 40 -200 cm lengths available
- Easy to clean

Cat. No.	Version	Qty	€
W-5001	Plastic	1	195,-
W-5005	Steel	1	245,-
W-5090	Angled	1	249,-

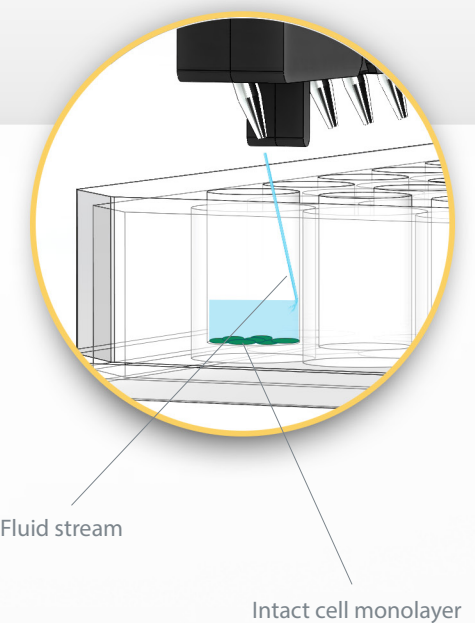
NEW

### Standard-Bore Cartridge Angled, Stainless Steel



- Angled, stainless steel nozzles
- Gentle dispensing
- Reduces disruption of cell-layers
- Minimizes bubble forming in the well plate

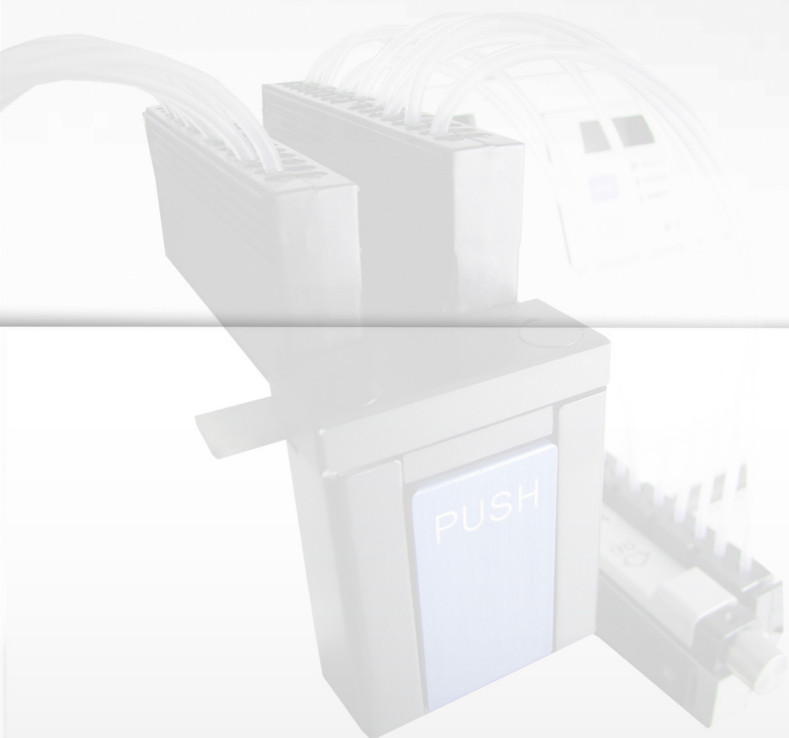
Cat. No.	Version	Qty	€
W-6001	Angled (Pack of 5)	1	995,-
W-6005	Angled (Pack of 10)	1 Pack	1880,- <small>(SAVE 5%)</small>



Cell-friendly angled dispensing  
For sensitive cell-based assays, the angled tips allow gentle dispensing to the side of the well.

This helps keep cell layers intact, even through multiple-step operations.





ADVANCED

## Small-Bore Cartridges

// To convince you of the quality, you can test our products before buying.

Up to 25% extended lifetime!

### The Small-Bore Tubing Assembly

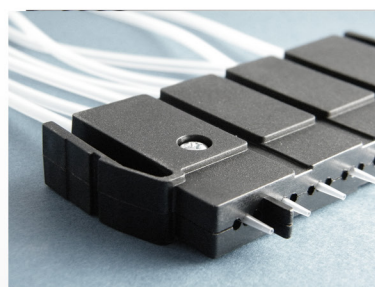
All Steinle tubing cartridges are pre-calibrated, fully autoclavable and suitable for Matrix® WellMate® systems from Thermo Scientific, INEGRA Viafill and XRD-384®.

Long-term tests in our laboratories have shown that Steinle cassettes have up to 25% longer lifetime com-

- Disp. accuracy:  $\pm 2.0\%$  or  $0.25\mu\text{l}$
- Disp. precision:  $\pm 2.0\%$  or  $0.25\mu\text{l}$

Our cartridges and accessories are quality made in Germany.

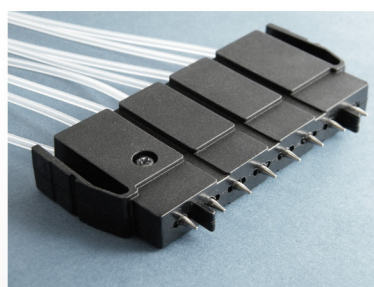
### Small-Bore Cartridge Plastic-Molded Nozzles



- Plastic-molded nozzles
- Silicone tubing
- 6 to 384-well microplates

Cat. No.	Version	Qty	€
W-3021	Plastic (Pack of 5)	1 Pack	790,-
W-3025	Plastic (Pack of 10)	1 Pack	1495,- <small>(SAVE 5%)</small>

### Small-Bore Cartridge Stainless Steel Nozzles

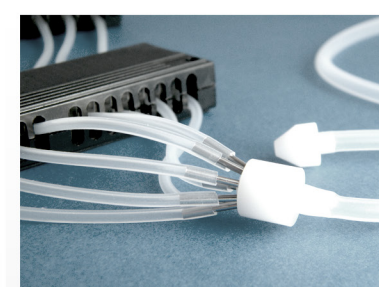


- 6 to 384-well microplates
- Hydrophobic
- Long product life
- High chemical compatibility

Cat. No.	Version	Qty	€
W-4021	Steel (Pack of 5)	1	950,-
W-4025	Steel (Pack of 10)	1 Pack	1805,- <small>(SAVE 5%)</small>

NEW

### Small-Bore Cartridge Manifold/Adapter 8 to 1

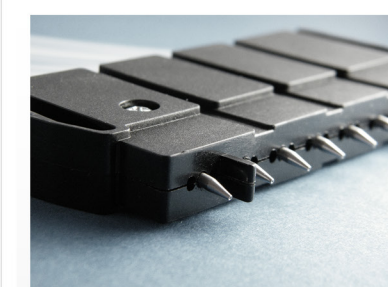


- Adapter connects 1 supply-tube to 8 standard-sized tubings.
- Ideal for automated systems
  - 40 -200 cm lengths available
  - Easy to clean

Cat. No.	Version	Qty	€
W-5021	Plastic	1	195,-
W-5025	Metal	1	245,-
W-5095	Angled	1	249,-

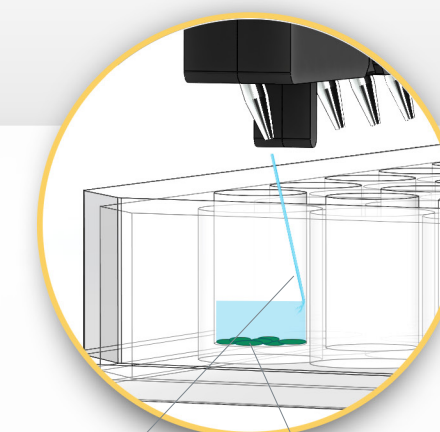
NEW

### Small-Bore Cartridge Angled, Stainless Steel



- Angled, stainless steel nozzles
- Gentle dispensing
- Reduces disruption of cell-layers
- Minimizes bubble forming in the well plate

Cat. No.	Version	Qty	€
W-6021	Angled (Pack of 5)	1	990,-
W-6025	Angled (Pack of 10)	1 Pack	1880,- <small>(SAVE 5%)</small>

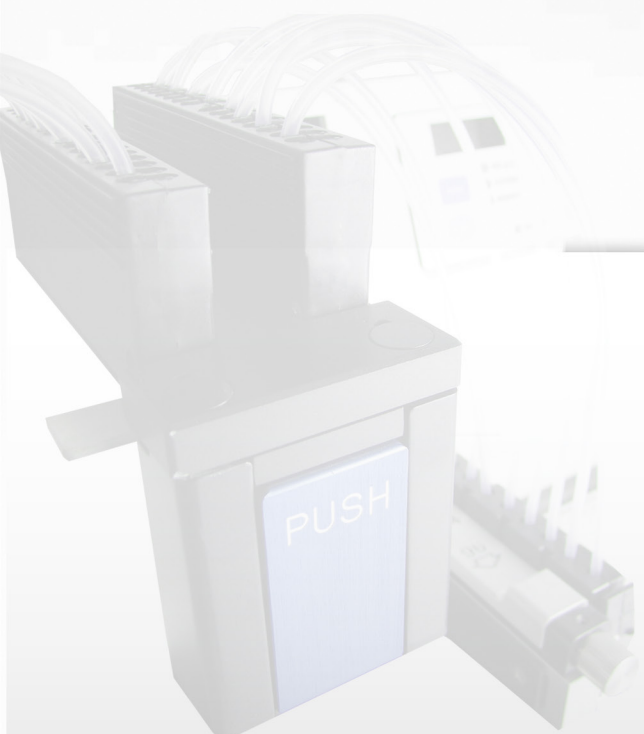


Fluid stream

Intact cell monolayer

Cell-friendly angled dispensing  
For sensitive cell-based assays, the angled tips allow gentle dispensing to the side of the well.

This helps keep cell layers intact, even through multiple-step operations.



## SERVICES

# Refurbishment of used cartridges

// Don't throw away your old, disused tubing cartridges.

In terms of service performance, accuracy and precision, you receive a dispensing cassette like new.

## Refurbishment & Modification Service

Don't throw away your old, disused tubing cartridges. No matter the condition they are in - we will refurbish them.

The refurbishment is a sustainable and cost-effective way to deal with your used cartridges.

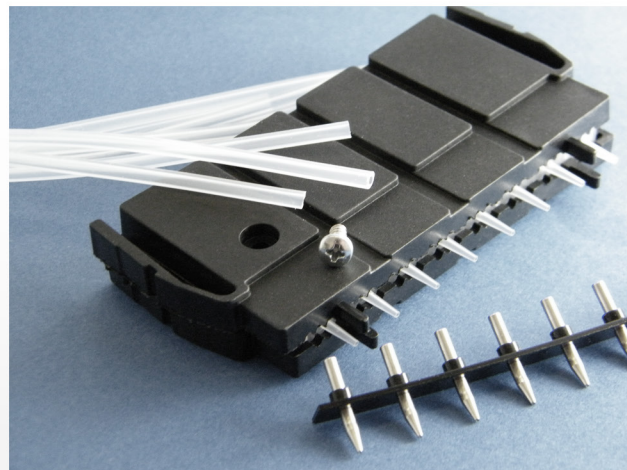
## Modification Service

If you have cartridges and would like to have them modified, with longer tubings, other tips, angled tips - no problem, we will do it for you. Please contact us for this.

## Our refurbishment includes:

- External & internal cleaning
- Repair (if required)
- New tubings
- New tips
- Calibration (DIN EN ISO 8655 )
- Measurement protocol

## Refurbishment Service

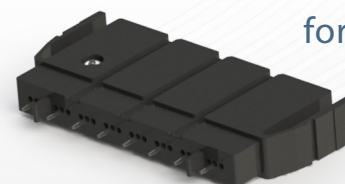


Cat. No.	Version (Cartridges)	Qty	€
W-R0010	Standard/Small Bore Plastic	1	145,-
W-R0020	Standard/Small Bore Metal	1	169,-
W-R0030	Std/Small Bore Angled Metal	1	229,-

The price may vary for special tubing lengths.

## ACCESSORIES

# Filter & Adapter for all cartridges



## Filter for Standard & Small cartridges

No.	Version	Qty	€
W-00FL	Std.-/ Small-Cart.	1	49,-

## Filter for all Adapter cartridges

No.	Version	Qty	€
W-00AD	for Adapter/Manifold Cartridges	1	49,-
W-00AD5	Pack of 5	5	195,-

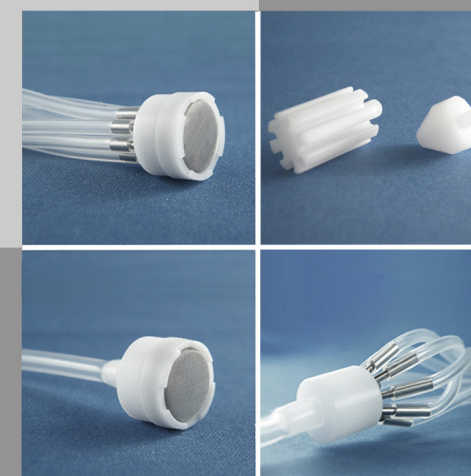
## Adapters/Manifolds

- Adapter splits 8 silicone tubings into one larger single tubing
- For a prolonged distance between system and reagent
- Ideal for automated environments
- Supply tubing available with silicone or **PTFE (Teflon®)** in 40 cm - 200 cm lengths
- Fully autoclavable and reusable

# Prevent clogging of your tips!

## Reagent Filters

- Adaptable stainless steel or nylon mesh sizes between 60 µm - 150 µm (62 µm is standard)
- Fully autoclavable and reusable (121°C, 1 bar, 20 min)
- Easy and quickly installed in place of tubing weight



## Tubing Weights

No.	Version	Qty	€
W-00MP	f. Std./Small C.	1	29,-
W-00MP5	Pack of 5	5	130,-
W-20MP	for Manifold C.	5	29,-
W-20MP5	Pack of 5	5	130,-

## Manifolds / Adapter for all cartridges

No.	Version	Qty	€
SWSP8ST	for Std. & Small Cartr.	1	95,-





#### \* Testing Products and Services

You are welcome to test our products and services. Please contact us for starting a test-period of two months.

Products and services will only be invoiced in case of satisfactory results. Non-satisfactory products have to be sent back immediately after the test-period is finished.

Steinle Labtechnology  
Ernst-Reuter-Straße 72  
63110 Rodgau  
Germany

CEO Martin Pohl

Phone +49 (0)6106 62524 04  
Fax +49 (0)6106 62524 05

[mail@steinle-labtec.com](mailto:mail@steinle-labtec.com)  
[www.steinle-labtec.com](http://www.steinle-labtec.com)

All prices are excl. tax and any excise duties. The prices are non-binding while errors are excluded.

The calculation takes place in Euro at the prices valid on the day of the conclusion of the contract.

By placing an order, the buyer recognizes and accepts our general terms and conditions, which can be found at our website at [www.steinle-labtec.com](http://www.steinle-labtec.com)

Steinle LLC  
16192 Coastal Highway  
Lewes, DE 19958  
USA

CEO Martin Pohl

[mail@steinle-labtec.com](mailto:mail@steinle-labtec.com)  
[www.steinle-labtec.com](http://www.steinle-labtec.com)

Wellmate®, Matrix® are registered trademarks from Thermo Scientific®.

