

ADVANCED

Tubing Cartridges compatible
to WellMate, ViFill and XRD-384
Reagent Dispenser

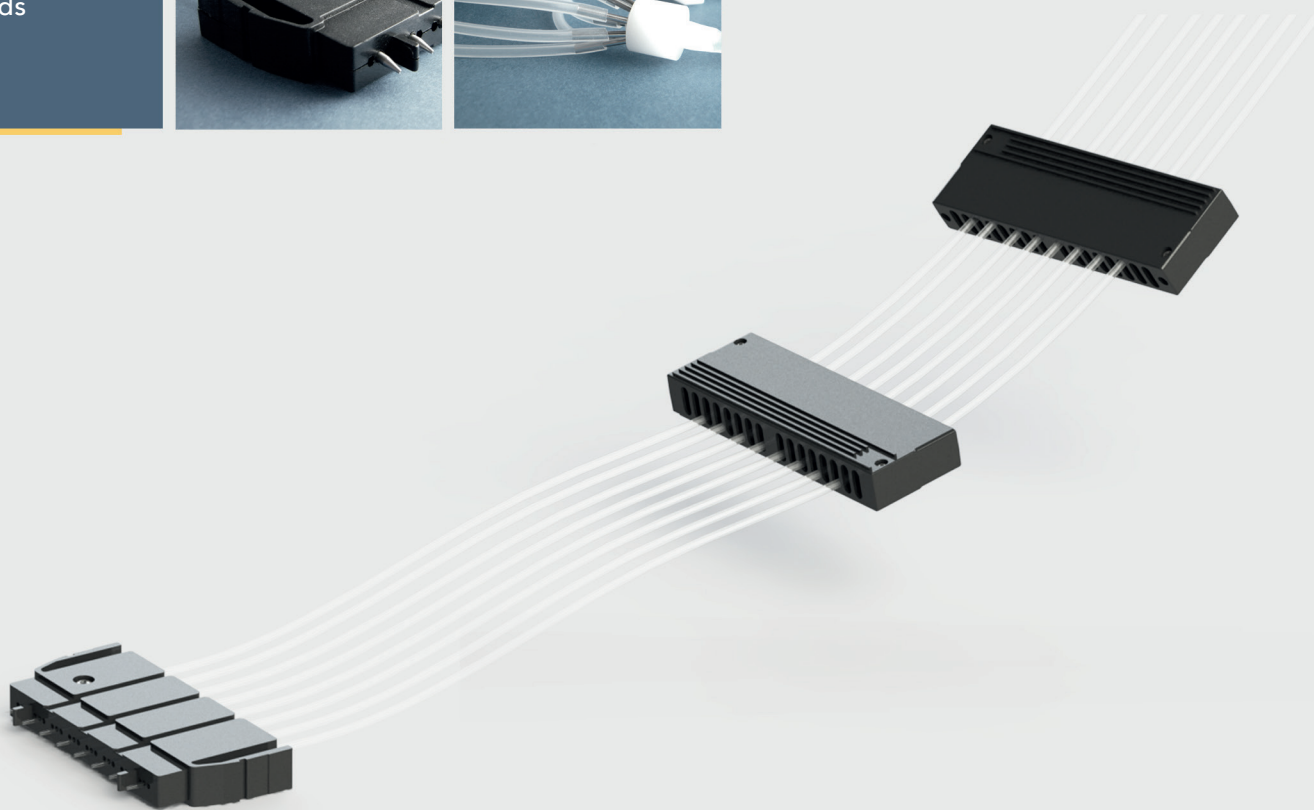
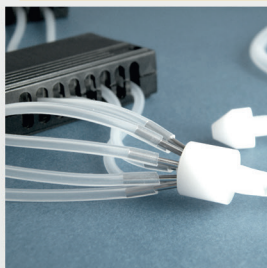
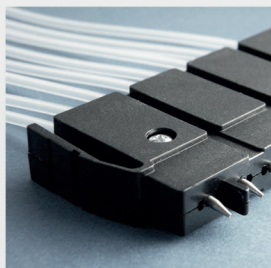


2026

- Identical Cartridges
- Angled Tip Cartridges
- Metal Tip Cartridges
- Adapter, Manifolds
- Refurbishment
- Filters

NEW

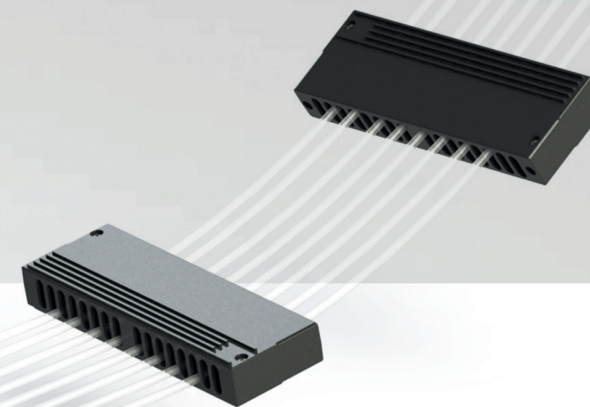
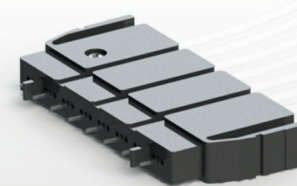
- Angled Tip Cartridges
- Filters, Manifolds



ADVANCED

Standard-Bore Cartridges

// To convince you of the quality, you can test our products before buying.



Up to 25% extended lifetime!

The Standard-Bore Tubing Assembly

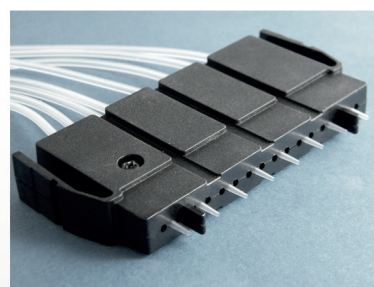
All Steinle tubing cartridges are pre-calibrated, fully autoclavable and suitable for Matrix® WellMate® systems from Thermo Scientific®.

Long-term tests in our laboratories have shown that Steinle cassettes have up to 25% longer lifetime compared to competitor cassettes.*

- Disp. accuracy: +/- 2.0% or 1.0 µl
- Disp. precision: +/- 2.0% or 1.0 µl

Our cartridges and accessories are quality made in Germany.

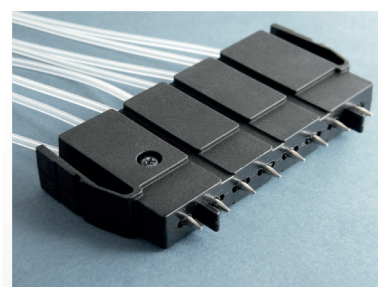
Standard-Bore Cartridge Plastic-Molded Nozzles



- Plastic-molded nozzles
- Silicone tubing
- 6 to 96-well microplates

Cat. No.	Version	Qty	\$, €
W-3001	Plastic (Pack of 5)	1 Pack	POR
W-3005	Plastic (Pack of 10)	1 Pack	POR (SAVE 5%)

Standard-Bore Cartridge Stainless Steel Nozzles

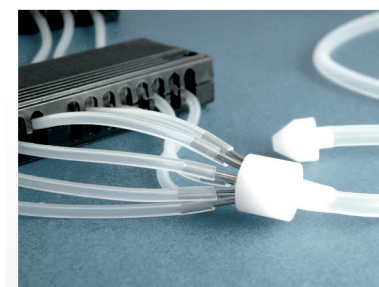


- 6 to 96-well microplates
- Hydrophobic
- Long product life
- High chemical compatibility

Cat. No.	Version	Qty	\$, €
W-4001	Steel (Pack of 5)	1 Pack	POR
W-4005	Steel (Pack of 10)	1 Pack	POR (SAVE 5%)

NEW

Standard-Bore Cartridge Manifold/Adapter 8 to 1

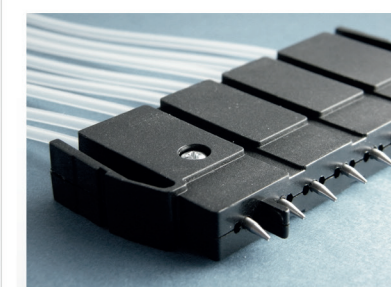


- Adapter connects 1 supply-tube to 8 standard-sized tubings.
- Ideal for automated systems
- 40 -200 cm lengths available
- Easy to clean

Cat. No.	Version	Qty	\$, €
W-5001	Plastic	1	POR
W-5005	Steel	1	POR
W-5090	Angled	1	POR

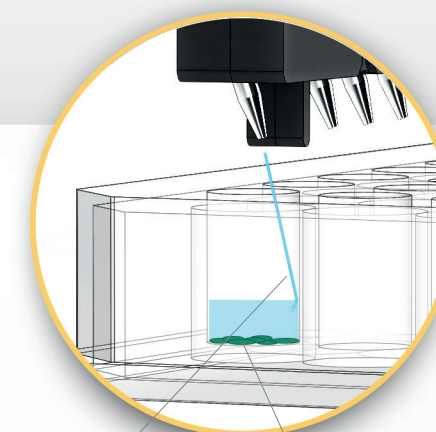
NEW

Standard-Bore Cartridge Angled, Stainless Steel



- Angled, stainless steel nozzles
- Gentle dispensing
- Reduces disruption of cell-layers
- Minimizes bubble forming in the well plate

Cat. No.	Version	Qty	\$, €
W-6001	Angled (Pack of 5)	1	POR
W-6005	Angled (Pack of 10)	1 Pack	POR (SAVE 5%)



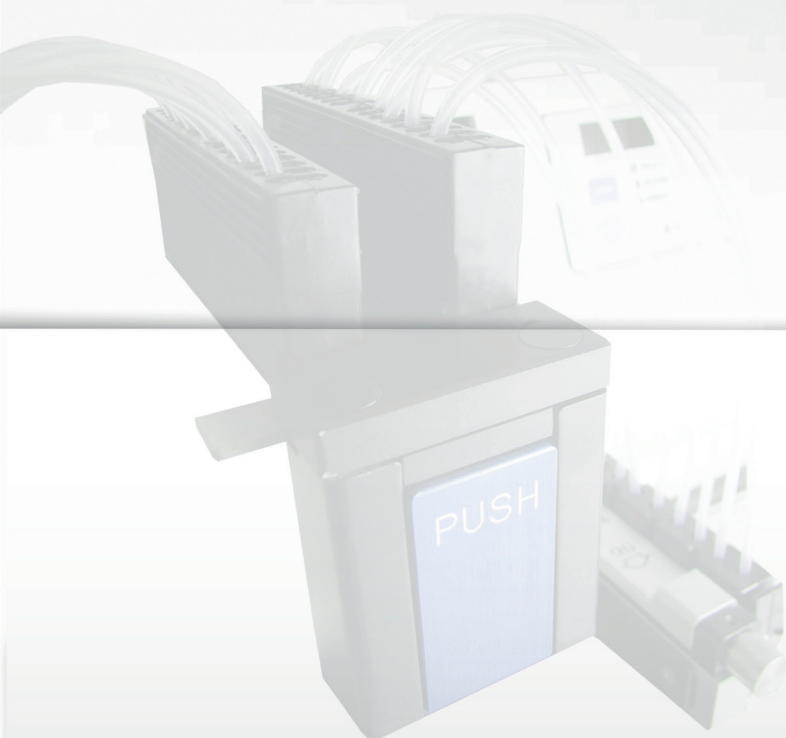
Fluid stream

Intact cell monolayer

Cell-friendly angled dispensing

For sensitive cell-based assays, the angled tips allow gentle dispensing to the side of the well.

This helps keep cell layers intact, even through multiple-step operations.



ADVANCED

Small-Bore Cartridges

// To convince you of the quality, you can test our products before buying.

Up to 25% extended lifetime!

The Small-Bore Tubing Assembly

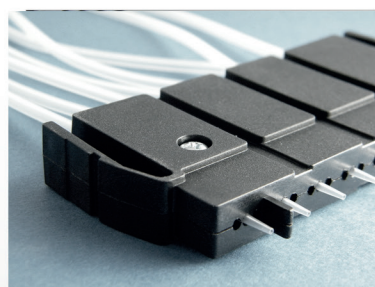
All Steinle tubing cartridges are pre-calibrated, fully autoclavable and suitable for Matrix® WellMate® systems from Thermo Scientific®.

Long-term tests in our laboratories have shown that Steinle cassettes have up to 25% longer lifetime compared to competitor cartridges.*

- Disp. accuracy: $\pm 2.0\%$ or $0.25\mu\text{l}$
- Disp. precision: $\pm 2.0\%$ or $0.25\mu\text{l}$

Our cartridges and accessories are quality made in Germany.

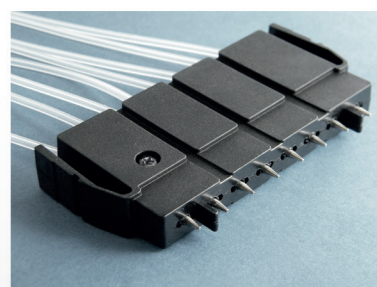
Small-Bore Cartridge Plastic-Molded Nozzles



- Plastic-molded nozzles
- Silicone tubing
- 6 to 384-well microplates

Cat. No.	Version	Qty	\$, €
W-3021	Plastic (Pack of 5)	1 Pack	POR
W-3025	Plastic (Pack of 10)	1 Pack	POR (SAVE 5%)

Small-Bore Cartridge Stainless Steel Nozzles

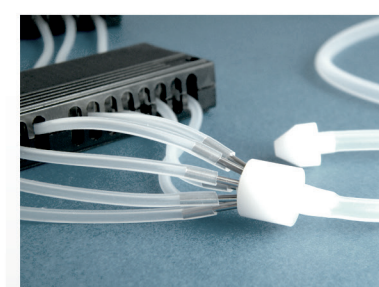


- 6 to 384-well microplates
- Hydrophobic
- Long product life
- High chemical compatibility

Cat. No.	Version	Qty	\$, €
W-4021	Steel (Pack of 5)	1 Pack	POR
W-4025	Steel (Pack of 10)	1 Pack	POR (SAVE 5%)

NEW

Small-Bore Cartridge Manifold/Adapter 8 to 1

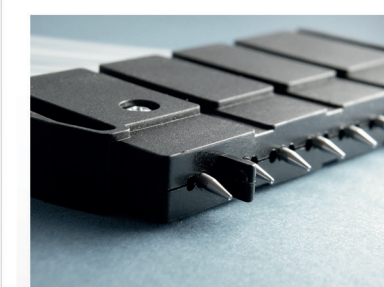


- Adapter connects 1 supply-tube to 8 standard-sized tubings.
- Ideal for automated systems
- 40 -200 cm lengths available
- Easy to clean

Cat. No.	Version	Qty	\$, €
W-5021	Plastic	1	POR
W-5025	Metal	1	POR
W-5095	Angled	1	POR

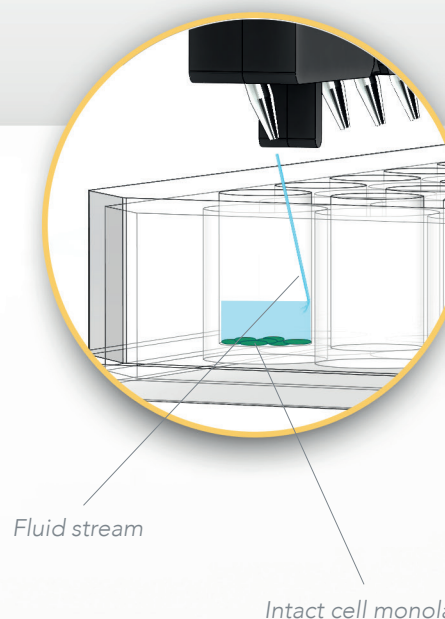
NEW

Small-Bore Cartridge Angled, Stainless Steel



- Angled, stainless steel nozzles
- Gentle dispensing
- Reduces disruption of cell-layers
- Minimizes bubble forming in the well plate

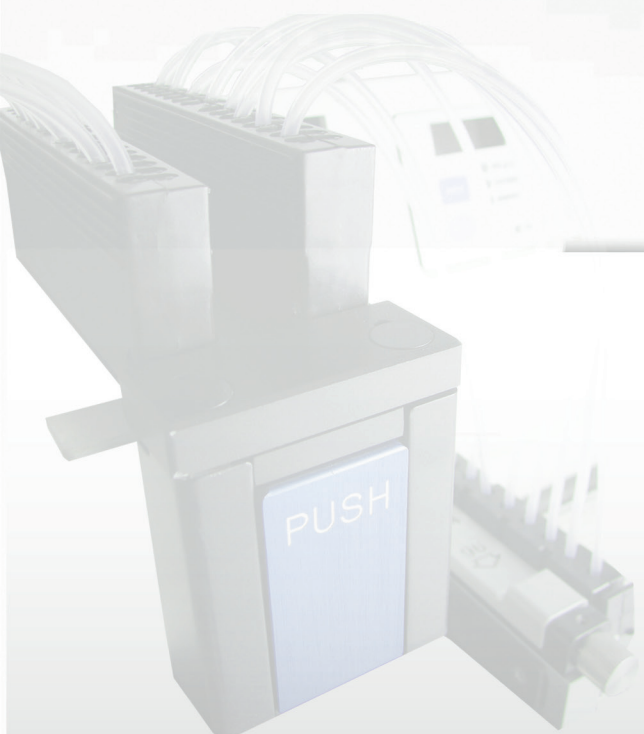
Cat. No.	Version	Qty	\$, €
W-6021	Angled (Pack of 5)	1 Pack	POR
W-6025	Angled (Pack of 10)	1 Pack	POR (SAVE 5%)



Cell-friendly angled dispensing

For sensitive cell-based assays, the angled tips allow gentle dispensing to the side of the well.

This helps keep cell layers intact, even through multiple-step operations.



SERVICES

Refurbishment of used cartridges

// Don't throw away your old, disused
tubing cartridges.

*In terms of service performance, accuracy
and precision, you receive a dispensing
cassette like new.*

Refurbishment & Modification Service

Don't throw away your old, disused
tubing cartridges. No matter the con-
dition they are in - we will refurbish
them.

The refurbishment is a sustainable
and cost-effective way to deal with
your used cartridges.

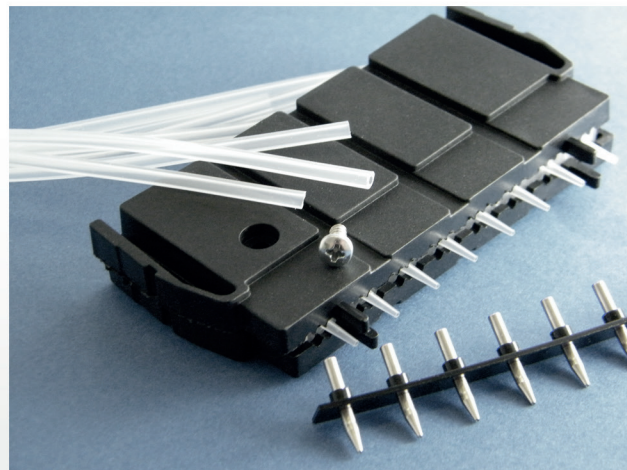
Modification Service

If you have cartridges and would like
to have them modified, with longer
tubings, other tips, angled tips - no
problem, we will do it for you. Please
contact us for this.

Our refurbishment includes:

- External & internal cleaning
- Repair (if required)
- New tubings
- New tips
- Calibration (DIN EN ISO 8655)
- Measurement protocol

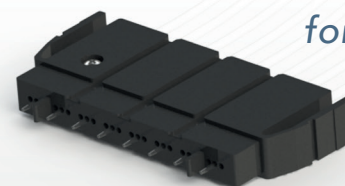
Refurbishment Service



Cat. No.	Version (Cartridges)	Qty	\$, €
W-R0010	Standard/Small Bore Plastic	1	POR
W-R0020	Standard/Small Bore Metal	1	POR
W-R0030	Std/Small Bore Angled Metal	1	POR

ACCESSORIES

Filter & Adapter for all cartridges



Filter for Standard & Small cartridges

No.	Version	Qty	\$, €
W-00FL	Std.-/ Small-Cart.	1	POR
W-00FL5	Pack of 5	5	POR

Filter for all Adapter cartridges

No.	Version	Qty	\$, €
W-00AD	for Adapter/Mani- fold Cartridges	1	POR
W-00AD5	Pack of 5	5	POR

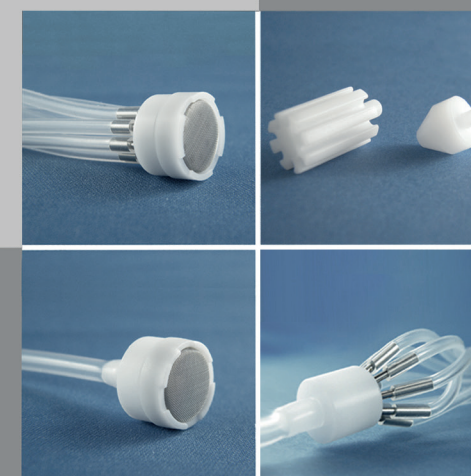
Adapters/Manifolds

- Adapter splits 8 silicone tubings into one larger single tubing
- For a prolonged distance between system and reagent
- Ideal for automated environments
- Supply tubing available with silicone or **PTFE (Teflon®)** in 40 cm - 200 cm lengths
- Fully autoclavable and reusable

Prevent clogging of your tips!

Reagent Filters

- Adaptable stainless steel or nylon mesh sizes between 60 µm - 150 µm (62 µm is standard)
- Fully autoclavable and reusable (121°C, 1 bar, 20 min)
- Easy and quickly installed in place of tubing weight



Tubing Weights

No.	Version	Qty	\$, €
W-00MP	f. Std./Small C.	1	POR
W-00MP5	Pack of 5	5	POR
W-20MP	for Manifold C.	5	POR
W-20MP5	Pack of 5	5	POR

Manifolds / Adapter for all cartridges

No.	Version	Qty	\$, €
SWSP8ST	for Std. & Small Cartr.	1	POR
W-SP8ST5	Pack of 5	5	POR



* Testing Products and Services

You are welcome to test our products and services. Please contact us for starting a test-period of two months.

Products and services will only be invoiced in case of satisfactory results. Non-satisfactory products have to be sent back immediately after the test-period is finished.

Steinle Labtechnology

Ernst-Reuter-Straße 72
63110 Rodgau
Germany

CEO Martin Pohl

Phone +49 (0)6106 62524 04
Fax +49 (0)6106 62524 05

mail@steinle-labtec.com
www.steinle-labtec.com

By placing an order, the buyer recognizes and accepts our general terms and conditions, which can be found at our website at www.steinle-labtec.com

Wellmate®, Matrix® are registered trademarks from Thermo Scientific®.

Steinle LLC

16192 Coastal Highway
Lewes, DE 19958
USA

CEO Martin Pohl

mail@steinle-labtec.com
www.steinle-labtec.com

