

Dispense Cassettes for BioTek® Reagent Dispensers

Compatible to MultiFlo® FX, MicroFlo®, EL406®, 406 FX®

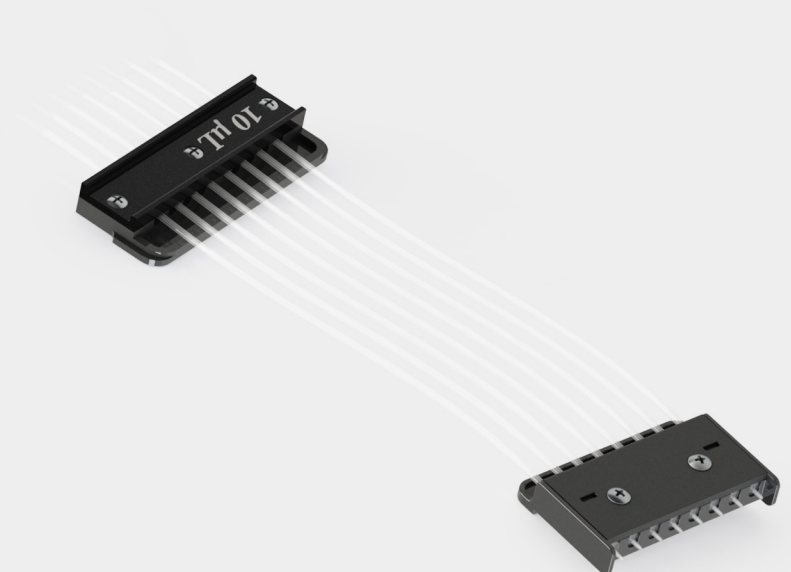
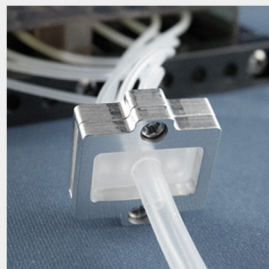
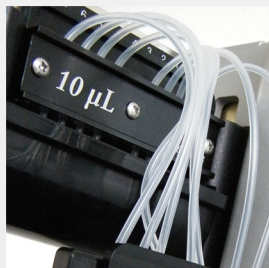


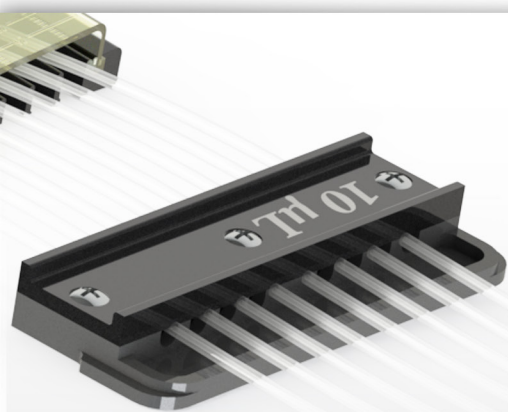
2026

- Identical Cassettes
- Angled Cassettes
- Large Bore Cassettes
- RAD ® & AMX Cassettes
- Refurbishment Service
- Filters & Manifolds

NEW

- L & XL Tip Cassettes
- RAD ® Cassettes
- AMX Cassettes





IDENTICAL

Plastic Tip Cassettes

1 μ L, 5 μ L & 10 μ L

IDENTICAL

Metal Tip Cassettes

1 μ L, 5 μ L & 10 μ L



Up to 25% extended lifetime!

IDENTICAL

Dispense Cassettes

All Dispense Cassettes from Steinle are suitable for BioTek® MultiFlo® FX, MicroFlo® Select and EL406® Dispenser.

You can choose between Small Volume (1 μ L) -, Medium Volume (5 μ L) and Large Volume (10 μ L) Cassettes, equipped with plastic tips or stainless steel tips.

Long-term tests in our laboratories have shown that Steinle cassettes have up to 25% longer lifetime compared to competitor cassettes.*

Our Dispense Cassettes and accessories are quality made in Germany.

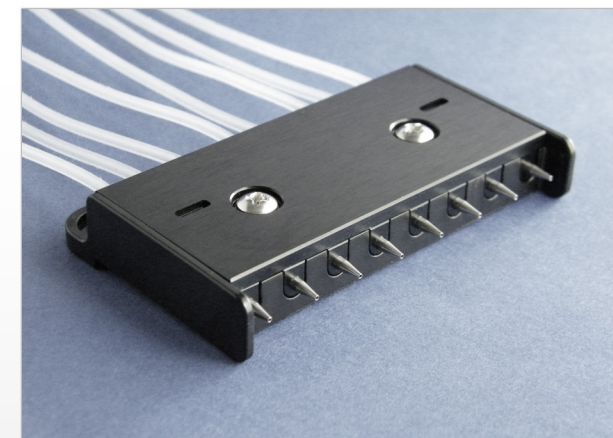
Plastic Tip Cassettes, IDENTICAL



Cat. No.	Plastic Tip Cassettes, Identical	Qty.	€/item
ST-4170007	10 μ L - Plastic Tip	1	
ST-4170008	5 μ L - Plastic Tip	1	
ST-4170009	1 μ L - Plastic Tip, (up to 384 plate)	1	
ST-4170010	1 μ L - Plastic Tip (1536 plate)	1	

Our 1 μ L Plastic Tip 1536 well cassette uses specially formed plastic tips to perfectly align with 1536 well plates.

Metal Tip Cassettes, IDENTICAL



Cat. No.	Metal Tip Cassettes, Identical	Qty.	€/item
ST-2170009	1 μ L - Metal Ruby Tip	1	
ST-2170008	5 μ L - Metal Tip	1	
ST-2170007	10 μ L - Metal Tip	1	

Our 1 μ L Metal Ruby Tip - and the 5 μ L Metal Tip cassette are perfectly suited for 1536 well plates.

High precision ruby tips

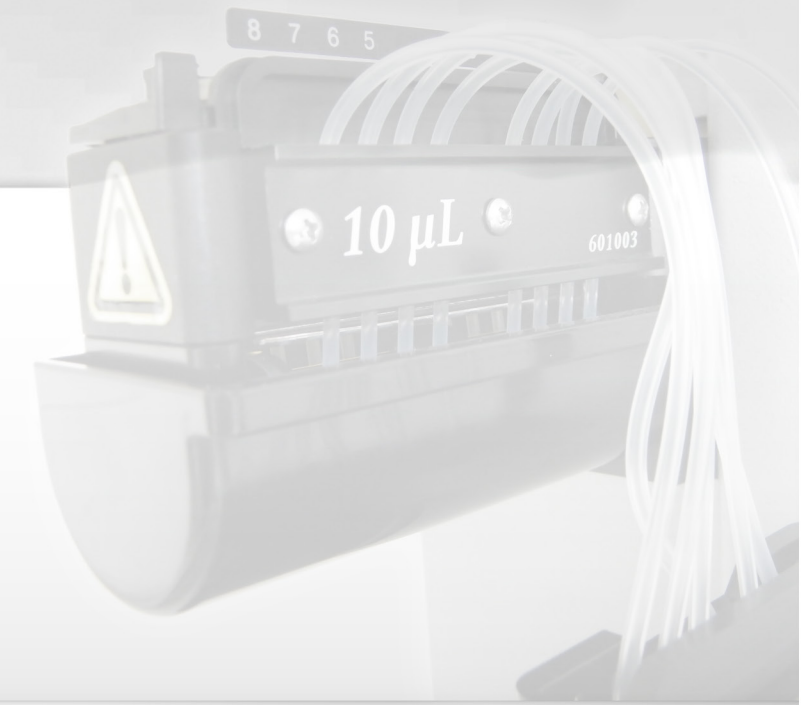
An ultra-smooth ruby orifice makes this cassette suitable to handle difficult liquids like DMSO or protein solutions. This special high-precision tip is the best choice for dispensing small volumes in 1536 well plate format.



Original microscopic image

SPECIAL
Large Bore Tip Cassettes
5 µl & 10 µl

SPECIAL
Angled Tip Cassettes
1 µl, 5 µl & 10 µl



SPECIAL
Large Bore Tip Cassettes

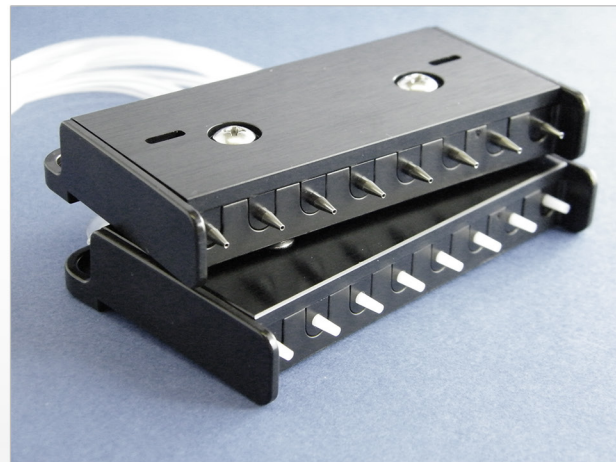
Gentle dispensing for integrity of fragile solutions

The loss of biological sample integrity can occur when fragile cell suspensions, protein aggregates and genomic materials are dispensed at high velocity due to the small internal diameter of the tips.

Our Large Bore Tip Cassettes (Plastic or Metal) are perfect for viscous fluids, and larger cell colonies.

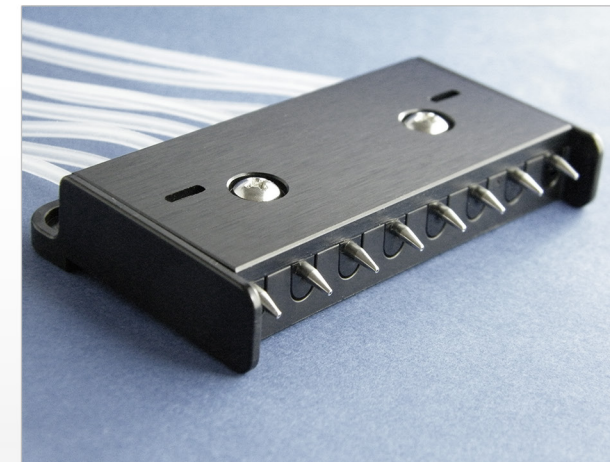
Ideal to dispense liquids that cause a lot of clogging issues or profit from reduced velocity while dispensing.

Large Bore Tip Cassettes, L, XL



Cat. No.	Large Bore Tip Cassettes	Qty.	€/item
ST-LB200	5 µl, Metal Tip, L 40% >	1	
ST-LB210	10 µl, Metal Tip, L 40% >	1	
ST-LB220	5 µl, Metal Tip, XL 85% >	1	
ST-LB230	10 µl - Metal Tip, XL 85% >	1	
ST-LB400	5 µl, Plastic Tips, L 40% >	1	
ST-LB410	10 µl, Plastic Tips, L 40% >	1	
ST-LB1300	10 µl, Plastic Tips, XL 130% >	1	

Angled Tip Cassettes, 1µl, 5µl & 10µl



Cat. No.	Angled Tip Cassettes	Qty.	€/item
ST-A100	1 µl - Angled Metal Tips	1	
ST-A200	5 µl - Angled Metal Tips	1	
ST-A240	10 µl - Angled Metal Tips	1	
ST-A460	1 µl - Angled Plastic Tips	1	

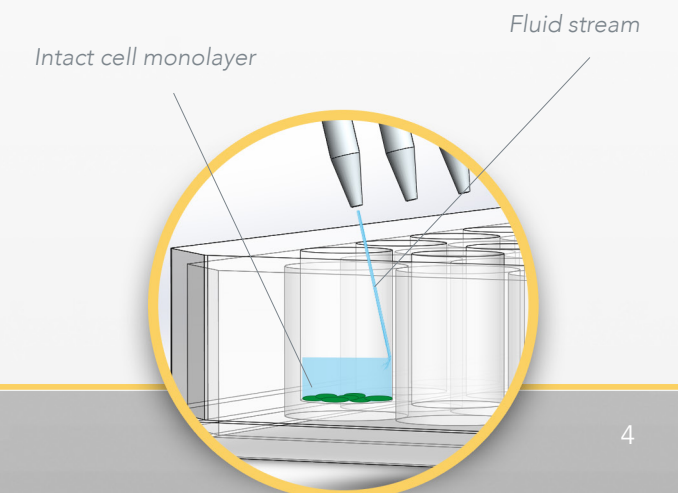
1 µl & 5 µl Angled Tip Cassettes suit for 1536 well plate format.

SPECIAL
Angled Tip Cassette

Cell-friendly angled dispensing

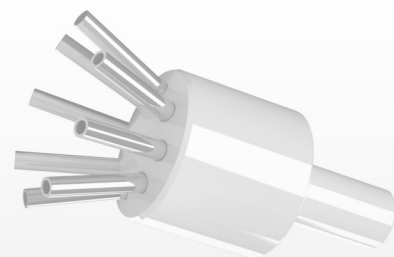
For sensitive cell-based assays, the angled tips allow gentle dispensing to the side of the well.

This helps to keep cell layers intact, even through multiple-step operations.



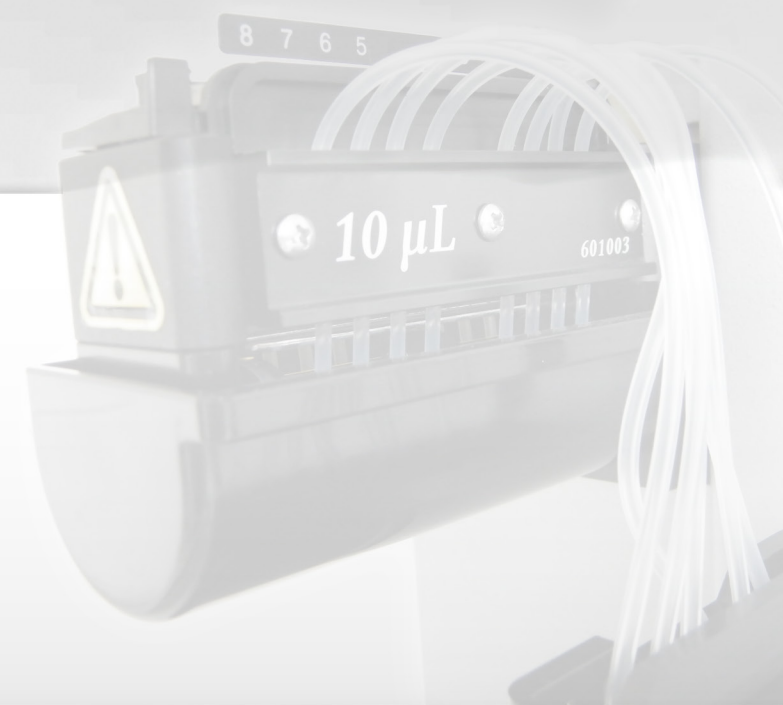
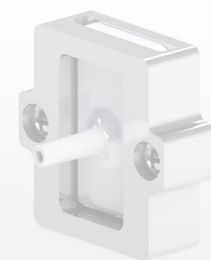
Long Tube Cassettes, 5 µl & 10 µl

with adapter to 200 cm single tubing



Long Tube Cassettes, 1 µl

with adapter to 200 cm single tubing



SPECIAL Long Tube Cassettes

with adapter to 200 cm single tubing

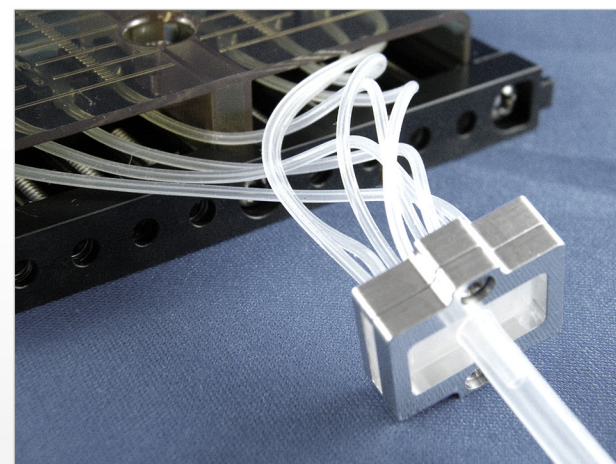
- Splitting 8 silicone tubings into one larger single tubing.
- For a prolonged distance between system and reagent.
- Ideal for automated environments.
- Supply tubing available with silicone or **PTFE (Teflon®)** in 40 cm- 200 cm lengths.
- Fully autoclavable and reusable.

Long Tube Cassettes, 5 µl & 10 µl



Cat. No.	Long Tube Cassettes	Qty.	€/item
ST-8T1617	10 µl Metal Tips, Adapter	1	
ST-8T1618	5 µl Metal Tips, Adapter	1	
ST-8T1417	10 µl Plastic Tips, Adapter	1	
ST-8T1418	5 µl Plastic Tips, Adapter	1	
ST-8TA10	10 µl Angled Metal Tips, Adapter	1	
ST-8TA05	5 µl Angled Metal Tips, Adapter	1	

Long Tube Cassettes, 1 µl

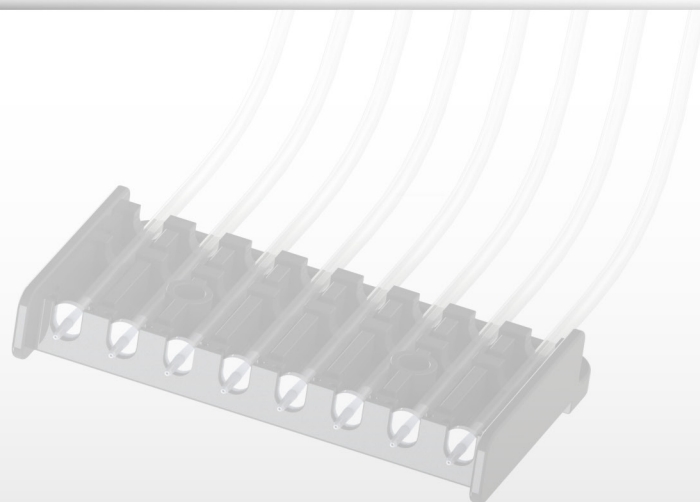


Cat. No.	Long Tube Cassettes	Qty.	€/item
ST-8T1619	1 µl Metal - Ruby Tips, Adapter	1	
ST-8T1419	1 µl Plastic Tips, Adapter	1	
ST-8T1536	1 µl Plastic Tips (1536 plate), Adapter	1	
ST-8TA111	1 µl Angled Metal - Ruby Tips, Adapter	1	

Up to 25% extended lifetime!

Long-term tests in our laboratories have shown that Steinle cassettes have up to 25% longer lifetime compared to competitor cassettes.*

Prevent clogging of your tips!



SERVICE Refurbishment of used Dispense Cassettes

1 µl, 5 µl & 10 µl

//
In terms of service performance,
accuracy and precision, you receive
a dispense cassette like new.

ACCESSORIES Filter & Adapter for all Dispense Cassettes

Reagent Filters

- Adaptable stainless steel or nylon mesh sizes between 5 µm - 350 µm (62 µm is standard)
- Fully autoclavable and reusable (121°C, 1 bar, 20 min)
- Easy and quickly installed in place of tubing weight

SERVICE Refurbishment & Calibration

Don't throw away your old, disused dispense cassettes. No matter the condition they are in - we will refurbish them.

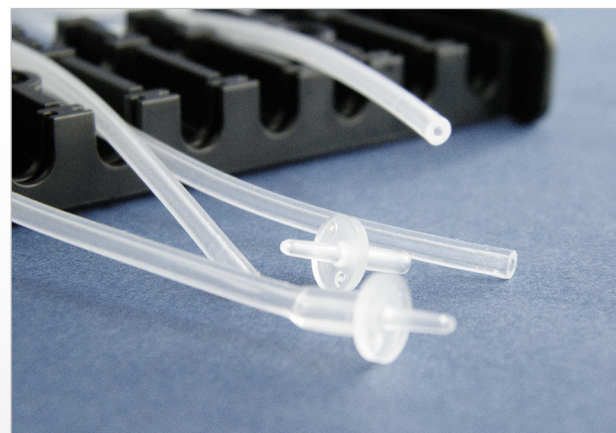
The refurbishment is a sustainable and cost-effective way to deal with your disused cassettes.

After replacement of the relevant components, the cassettes are calibrated manually, channel-wise and in conformity with DIN EN ISO 8655.

Our refurbishment includes:

- External & internal cleaning
- Repair (if required)
- New tubings and tips
- Calibration incl. measurement protocol

Refurbishment, 1 µl, 5 µl & 10 µl



Cat. No.	Refurbishment	Qty.	€/item
ST-9170007	5 µl, 10 µl - Metal Tips	1	
ST-7170007	1 µl, 5 µl, 10 µl - Plastic tips	1	
ST-9170009	1 µl Metal Ruby Tips	1	
ST-7170009	1 µl Plastic Tips (1536 plate)	1	
ST-A1510	1, 5, 10 µl Angled Metal Tip	1	

Filter for 5µl and 10µl Cassettes

No.	Version	Qty	€
BT-00FL	5µl, 10µl Cassettes	1	
BT-00FL5	Pack of 5	5	

Filter for all Adapter cassettes (1µl, 5µl and 10µl)

No.	Version	Qty	€
BT-00AD	Adapter Cassettes	1	
BT-00AD5	Pack of 5	5	

Adapters/Manifolds

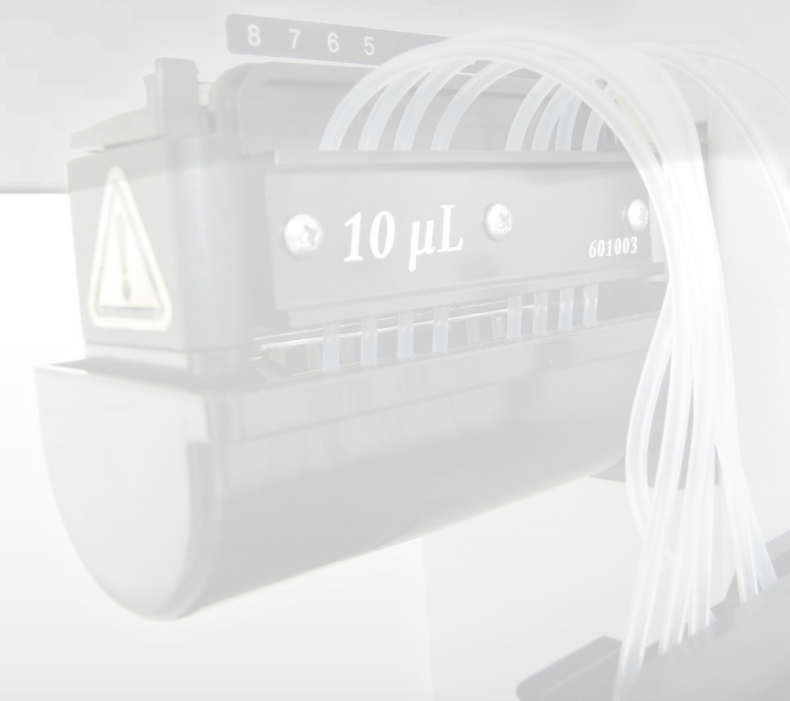
- Adapter splits 8 silicone tubings into one larger single tubing
- For a prolonged distance between system and reagent
- Ideal for automated environments
- Supply tubing available with silicone or **PTFE (Teflon®)** in 40 cm - 200 cm lengths
- Fully autoclavable and reusable

Filter for all 1µl Cassettes

No.	Version	Qty	€
BT-00MP	1µl Cassettes	1	
BT-00MP5	Pack of 5	5	

Manifolds / Adapter for all cassettes (1µl, 5 µl & 10µl)

No.	Version	Qty	€
BT-SP8ST	5µl and 10µl Cassettes	1	
BT-SP8ST5	Pack of 5 for 5µl, 10µl	5	
BT-SP8SC	1µl Cassettes	1	
BT-SP8SC5	Pack of 5 1µl Cassettes	5	



RAD® Cassettes 1 µl, 5 µl & 10 µl

AMX Cassettes, 5 µl

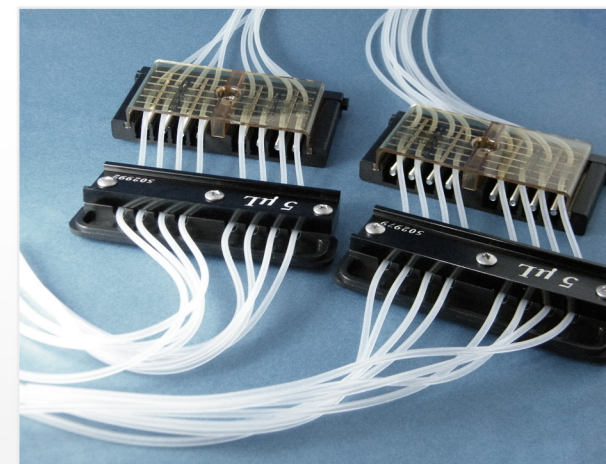
RAD ® Cassettes

We offer a wide range of cassettes for RAD® peristaltic pumps. Customized solutions with ruby nozzles, extra large bore tips and special tubing as well as a refurbishment service for used cassettes can also be offered.

All our RAD ® cassettes are compatible with the MultiFlo ® FX.



Cat. No.	RAD® Cassettes, compatible with MultiFlo ® FX	Qty.	€/item
ST-1260015	10 µL plastic tip	1	
ST-1260016	5 µL plastic tip	1	
ST-1260017	1 µL plastic tip	1	
ST-1260018	10 µL steel tip	1	
ST-1260019	5 µL steel tip	1	
ST-1260020	10 µL, plastic tip, large bore	1	
ST-1260021	1 µL steel tip (ruby)	1	
ST-1260022	8-to-1 tube/tip, plastic tip	1	



Cat. No.	AMX Cassettes, compatible with MultiFlo® FX	Qty.	€/pack
ST-1260035	2 x 5 µl cassettes	1	

2 x 5 µl Cassettes, for AMX peristaltic pump. Cassettes will be installed with AMX manifolds included with AMX module.



All prices are excl. tax and any excise duties. The prices are non-binding while errors are excluded.

The calculation takes place in EUR at the prices valid on the day of the conclusion of the contract.

By placing an order, the buyer recognizes and accepts our general terms and conditions, which can be found at our website at

www.steinle-labtec.com

MultiFlo FX®, MicroFlo®, EL406® are registered trademarks from BioTek®.

Steinle Labtechnology

Ernst-Reuter-Straße 72

63110 Rodgau

Germany

CEO Martin Pohl

Phone +49 (0)6106 62524 04

Fax +49 (0)6106 62524 05

mail@steinle-labtec.com

www.steinle-labtec.com